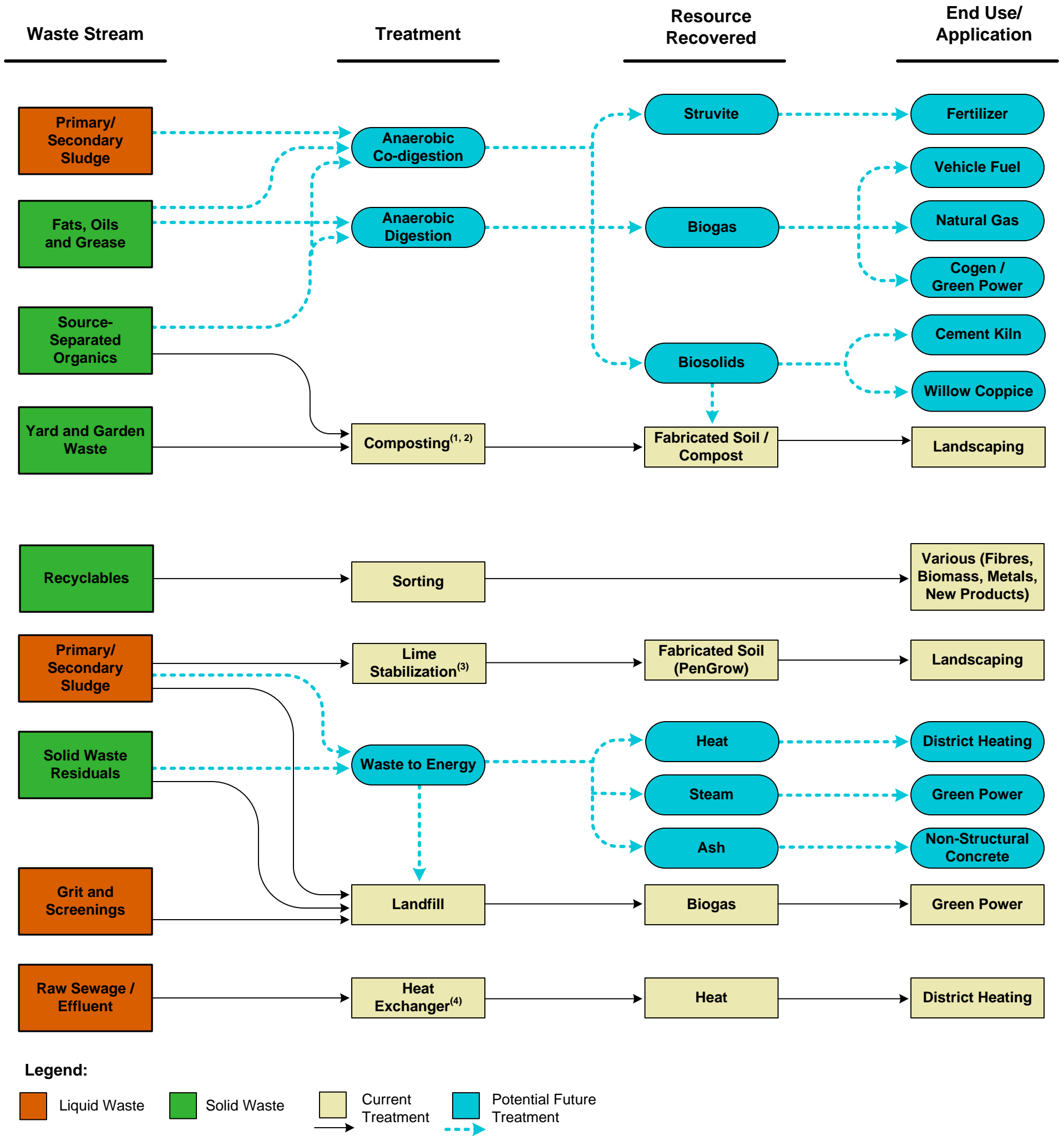


Integrated Liquid and Solid Waste Management – Capital Regional District



Notes:

- Limited source-separated organics are collected, transferred at Hartland Landfill and hauled to Cobble Hill in-vessel composting facility.
- Yard and garden waste is handled by municipalities and private industry and composted locally in outdoor windrow facilities.
- The biosolids at the Saanich Peninsula Wastewater Treatment Plant are treated by a lime stabilization process and distributed as PenGrow.
- A pilot project is underway at the Saanich Peninsula Wastewater Treatment Plant to recover heat from effluent for Panorama Recreation Centre and the treatment plant. No projects underway to extract heat from raw sewage at this time.